

INOX | VRX

REFRIGERATED SHOWCASE ▶ GN 1/4 PANS ▶ REFRIGERATED TOPPING UNITS

VRX 22/33

GAS
R600a

40 mm

4
 CLIMATIC
 CLASS

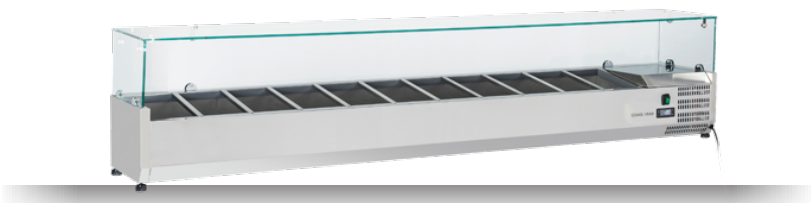
38°C

DETAILS

Tempered glass top

Digital Thermostat

Higher stainless steel adjustable feet as optional



GENERAL FEATURES

Refrigerated horizontale showcase (Pans GN1/4)	•
Stainless Steel exterior and interior	•
Static Cooling	•
Automatic compressor cycle defrost	•
Single copper pipe evaporator (No welding in the foaming)	•
Digital Thermostat	•
N.4 Adjustable feet	•
Spacer set included	•
GN1/4 Pans are not included with the unit	•
Tempered glass top	•
Energy efficiency class: -	•

TECHNICAL SPECIFICATIONS

Capacity	74 L
Temperature	+2° ~ +8°C
Consumption	2.2 kWh/24h
Rated Power	160 W
Noise level	56 dB(A)
Net Weight	54.5 Kg
Gross Weight	88 Kg
External Dimensions (WxDxH mm)	2200x335x440
Internal Dimensions (WxDxH mm)	1850x246x163
Packaging dimensions (WxDxH mm)	2340x405x460
Loading quantities 20'/40'/40'HQ	50/125/125

CERTIFICATION

CE RoHS

PRODUCT DIMENSIONS

